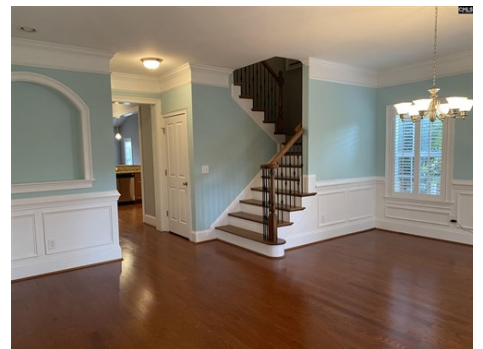


Craftsman, Single Family - Chapin, SC



\$ 349,900



805 Boatswain Loop, Chapin, SC 29036-6128

- » Beds: 3 | Baths: 2 Full, 1 Half
- » MLS #: 552075
- » Single Family | 2,692 ft² | Lot: 6,098 ft²
- » Front Yard Maintenance Included
- » Owner's Suite on Main Level
- » More Info: 805BoatswainLoop.IsForSale.com



Tricia Kim
Property Pros LLC @ Keller
Williams Palmetto
(803) 699-7000 (Office)
(803) 960-1615 (Realtor)
(803) 608-4569 (Realtor)
tricia@fowlerteamsc.com
<http://www.peggyfowler.kw.com>

kw PALMETTO
KELLERWILLIAMS. REALTY

Keller Williams Palmetto
1523 Huger Street
Suite B
Columbia, SC 29201
(803) 722-1900

Welcome to low-maintenance living in Chapin's desirable Lakeport community on Lake Murray! Front yard maintenance included in the HOA fee, as well as, a community dock, clubhouse & pool. This carriage home offers a spacious covered porch (perfect for displaying your Fall decor), formal dining room, mud/laundry room w/ sink, kitchen that opens to the living room w/ vaulted ceiling, fireplace, built-ins & wood floors throughout. The kitchen features granite c-tops, pantry, & breakfast bar. Owner's suite located on the main floor w/ tray ceiling, large walk-in closet, spacious private bathroom w/ whirlpool tub, walk-in shower, double vanity sink w/ TONS of countertop & cabinet space, water closet & linen closet. Upstairs includes 2 BRs w/ a Jack & Jill style bathroom & spacious finished bonus room w/ skylights & walk-in attic access w/ storage space. Additional home features include: central vacuum, irrigation system in front & back, heavy crown molding, wood staircase w/ iron balusters, built-in speakers & screened back patio. The backyard landscaping creates a nice view for relaxing. Lakeport is located just 3 miles from I-26, 20 minutes from Columbia & just minutes from all the dining, shopping & entertainment that Ballentine & Chapin offer. Call today to schedule your private viewing!

